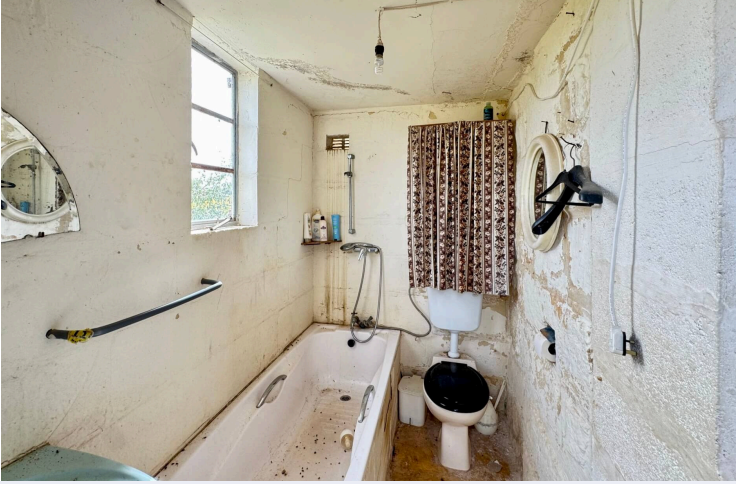


3940

Qrendi, Malta

€891,000





Overview

Specifications

Bathrooms



Description

QRENDI - Set on the outskirts of a beautiful village, this fully detached Residential Farmhouse offers peace, privacy, and uninterrupted 360-degree ODZ views.

Spread over 2460 sqm of land with an 80 sqm built-up area, traditional rubble walls surround this unique property and is accessible by vehicle via a private gate and drive-in.

The layout includes 5 rooms, rich in character and original features such as exposed stone walls, wooden beams, stone slabs (xorok), corbel (kileb), and a stone manger (maxtura). The property is serviced with water and electricity, offering excellent potential for a tranquil countryside residence or rural retreat.

Call now to schedule your viewing and explore this rare gem!




Additional information

Contact us



Clint Borg Ferriggi

 (+356) 79602519

 clintbf@club25.com.mt

